

Name _____
 Honors Physics
 Period _____



Date _____
 Vectors/Projectiles WS #6H
 Mrs. Nadworny

Various Vector Problems

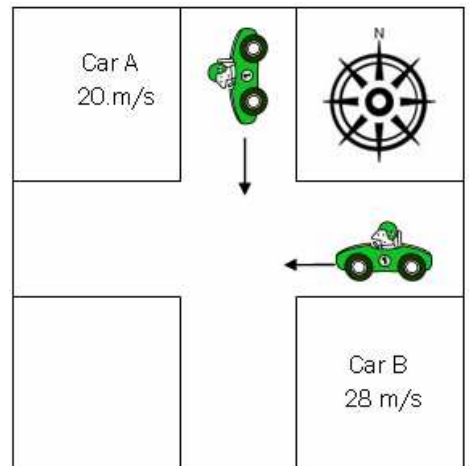
(16 pts)

Directions - Solve the following problems using the method learned in class. Show ALL work neatly using proper units, significant figures and the GUESS method where appropriate.

- Two ropes pull on a log. The first rope pulls with a force of 16.0 newtons at 21.0° . The second rope pulls with a force of 17.5 newtons at 311° . Use the mathematical method to determine the resultant force.

- Use the diagram to the right to answer the questions.
 $V_{AG} = 20. \text{ m/s}$ $V_{BG} = 28 \text{ m/s}$

- What is the relative velocity of car B with respect to car A? [Remember to include angle and direction.]



- What is the relative velocity of car A with respect to car B? [Remember to include angle and direction.]

Answers in size order: 27, 34, 34, 36, 54, 344