

Name _____
Honors Physics
Period _____



Date _____
Vectors/Projectiles WS #6H
Mrs. Nadworny

Various Vector Problems

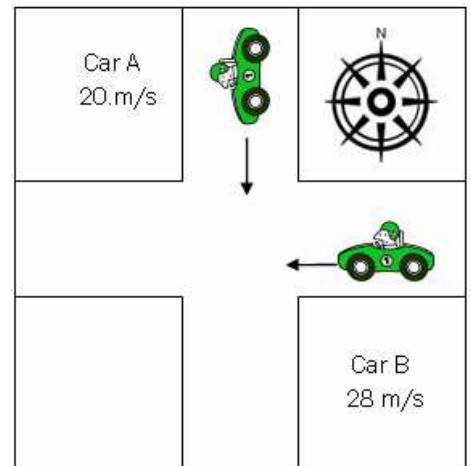
Directions - Solve the following problems using the method learned in class. Show ALL work neatly using proper units, significant figures and the GUESS method where appropriate.

- Two ropes pull on a log. The first rope pulls with a force of 14.0 newtons at 16.0° . The second rope pulls with a force of 16.5 newtons at 309° . Use the mathematical method to determine the resultant force. [You may want to use the back of this page to show all of your work.]

- Use the diagram to the right to answer the questions.

$$V_{AG} = 20. \text{ m/s} \quad V_{BG} = 28 \text{ m/s}$$

- What is the relative velocity of car B with respect to car A? [Remember to include angle and direction.]



- What is the relative velocity of car A with respect to car B? [Remember to include angle and direction.]

Answers in size order: 26, 34, 34, 36, 54, 340.